

2018 NCI IMAT PI Meeting

**19th Annual Innovative Molecular
Analysis Technologies Principal
Investigators Meeting**

November 28 - 30, 2018

**Hilton Washington DC/Rockville
Rockville, MD**

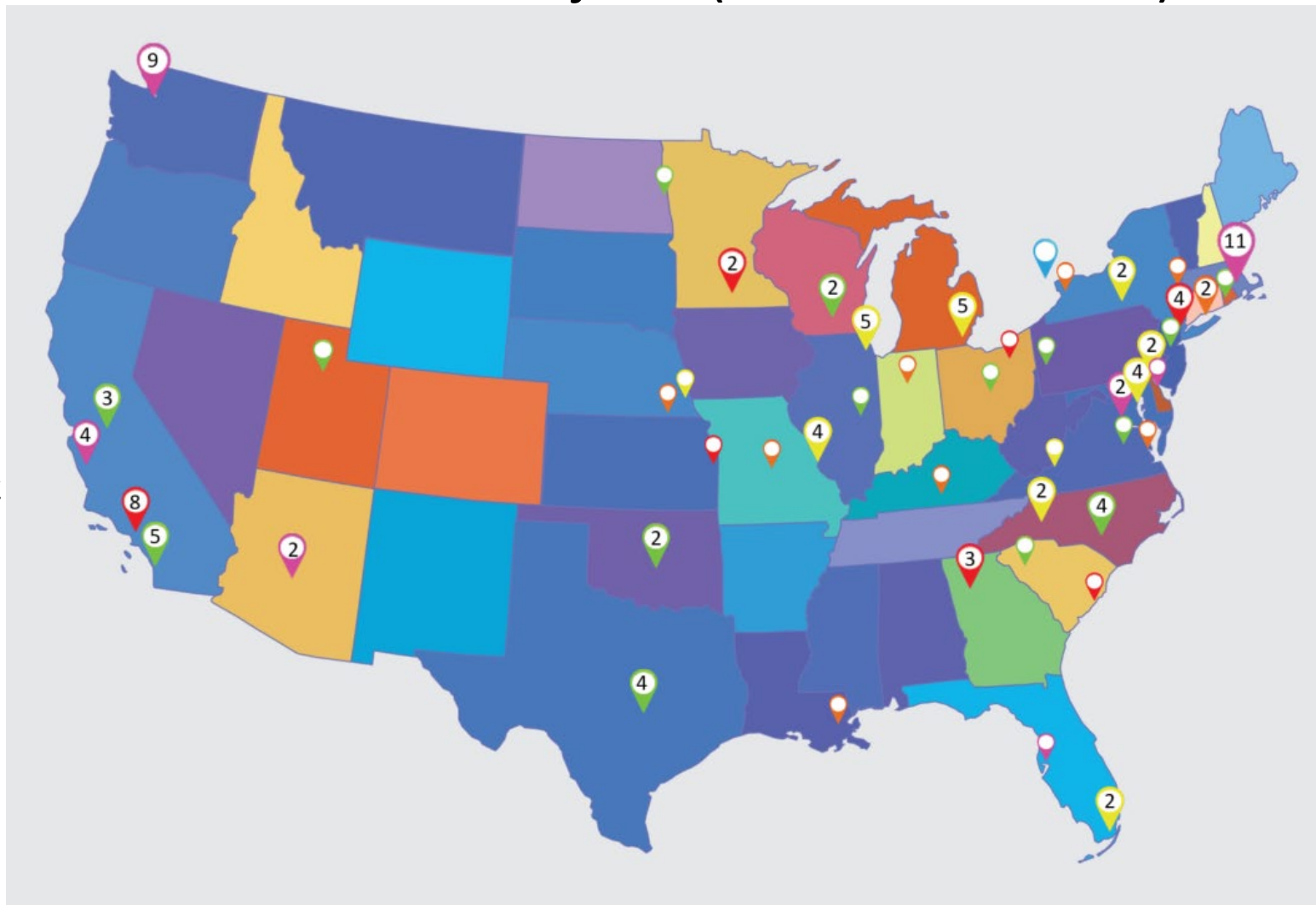


[#IMAT2018](https://twitter.com/NCIIMAT2018)

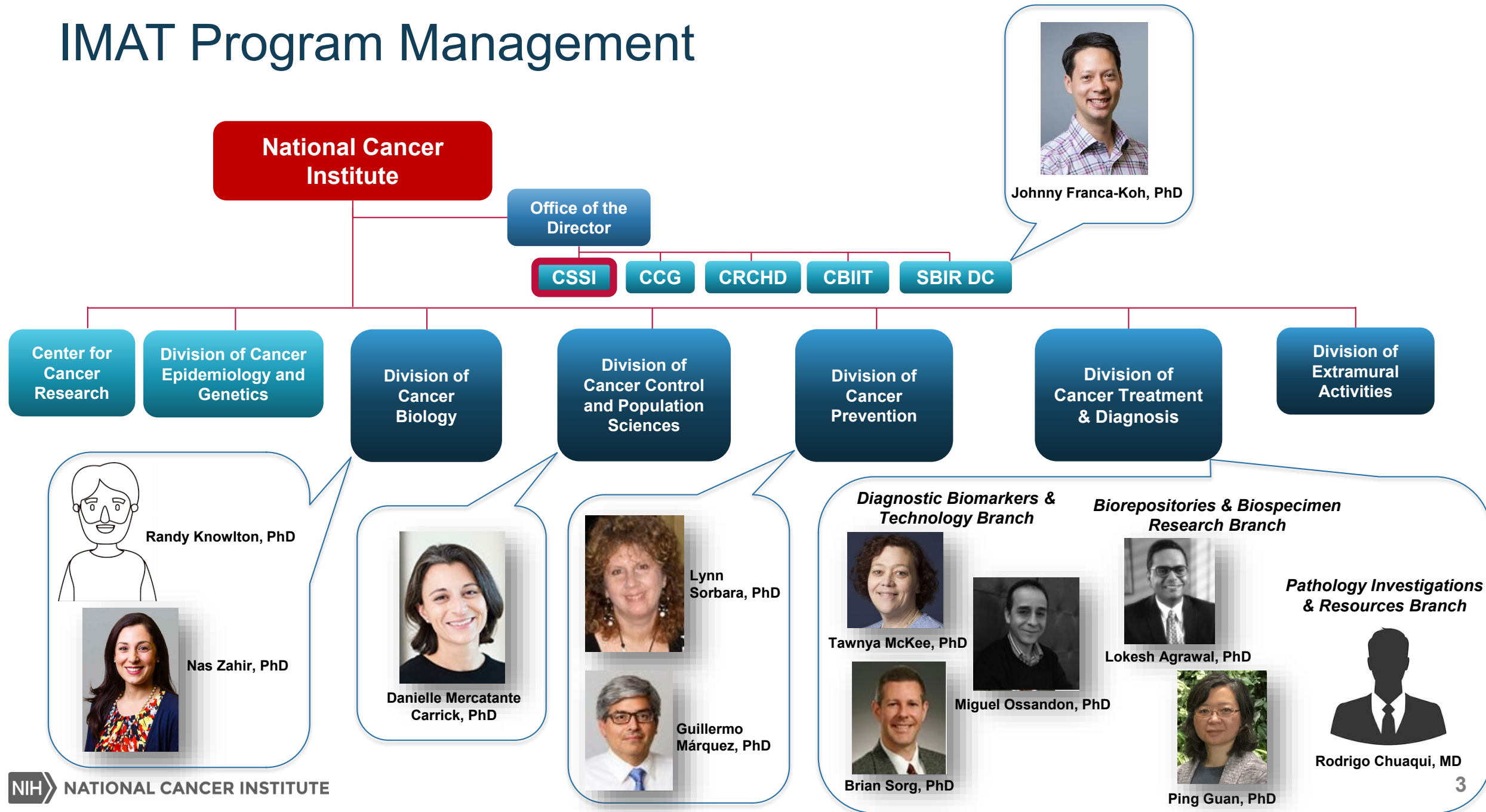
2018 PI Meeting Agenda

- Molecular Pathway Tools
- New Approaches for Sample Preparation and Preservation
- miRNA Detection Approaches
- Technologies to Improve Drug Discovery and Development
- Next Generation Clinical Diagnostic Technologies
- Cancer Modeling
- Imaging Probes
- Single Cell Analysis Technologies
- Advances in Mass Spectrometry

119 Active Projects (66 R21 & 53 R33)



IMAT Program Management

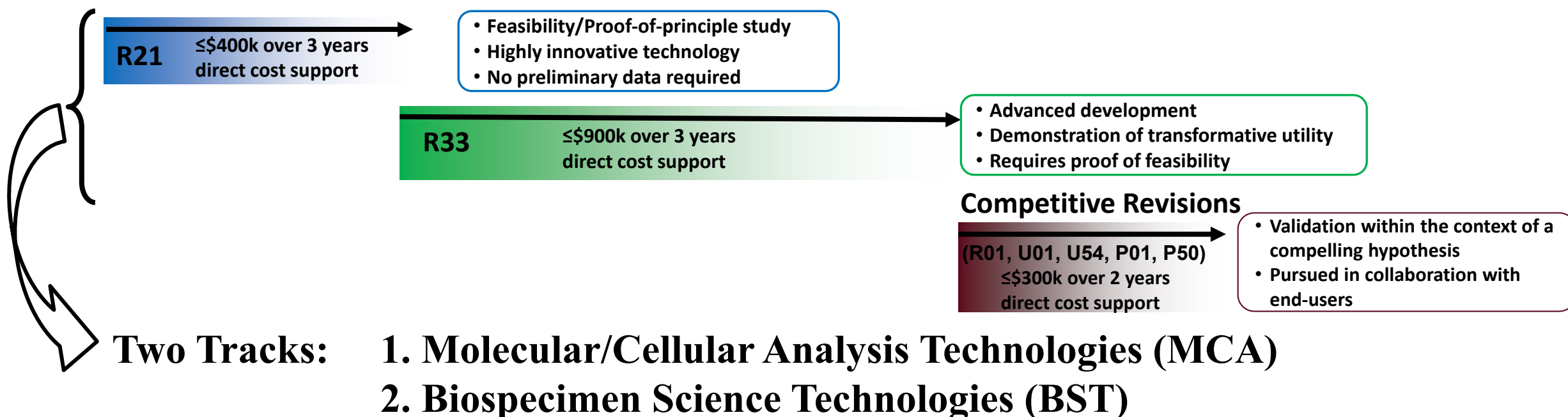
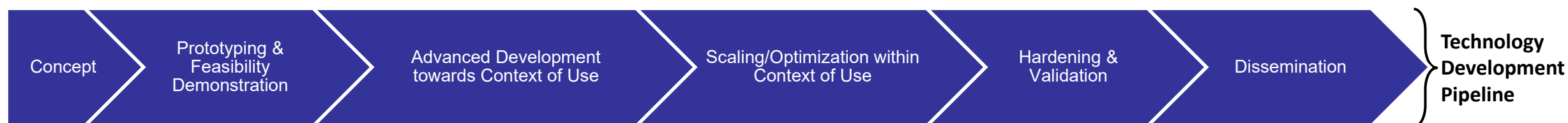


Innovative Molecular Analysis Technologies (IMAT) Program



Program Mission:

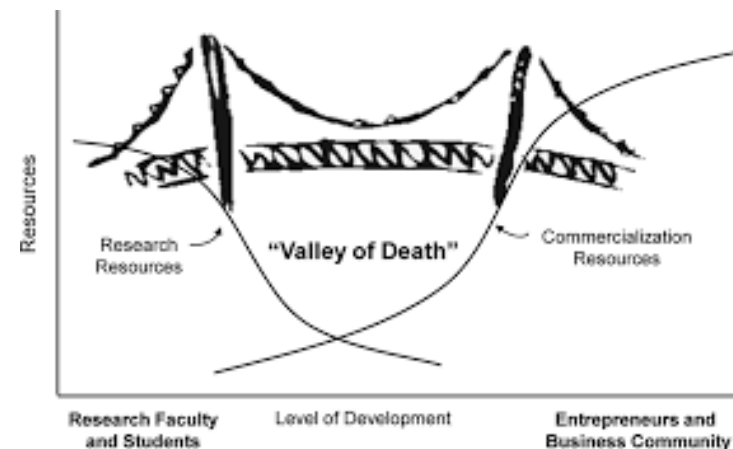
To support the development, maturation, and dissemination of novel and potentially transformative next-generation technologies through an approach of balanced but targeted innovation in support of clinical, laboratory, or epidemiological research on cancer.





R21 ≤\$400k over 3years
(direct costs)

R33 ≤\$900k over 3years
(direct costs)



- Intensive *entrepreneurial immersion* course aimed at reducing commercialization risk
- Emphasizes **reaching out to customers to test hypotheses about the need** and market for the technology being developed.



- GCM establishes a specific scope of work and detailed project plan with each team.
- Along the way, projects receive guidance and access to GCM's resources and network.

Competitive Revision RFAs

(R01,U01,U54,P01,P50,U2C)
≤\$300k over 2 years
(direct costs)

- Validation within the context of a compelling hypothesis
- Pursued in collaboration with end-users

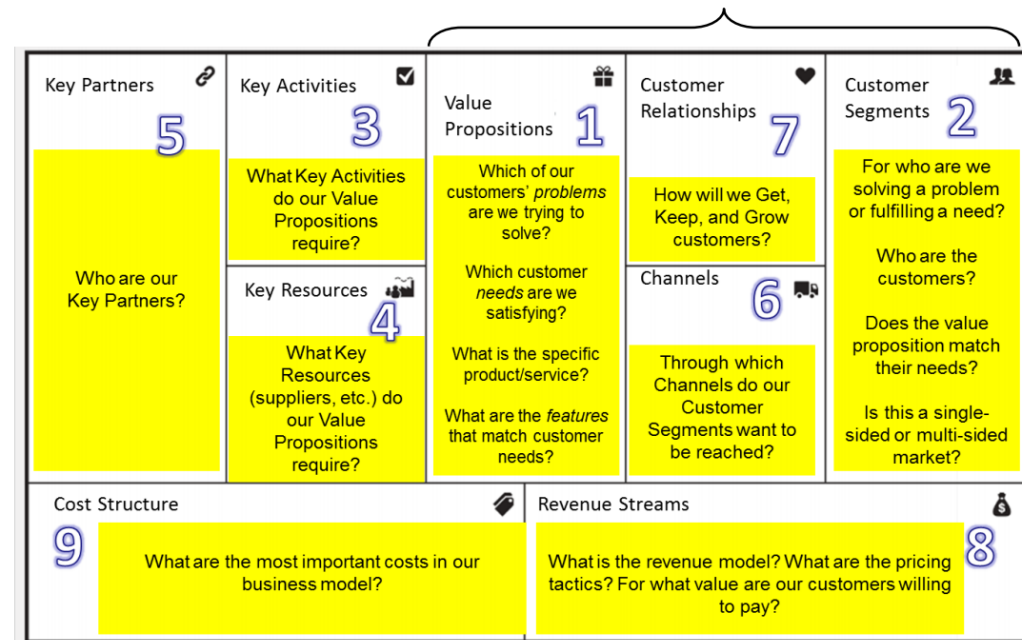


TOP 10 STARTUP MISTAKES



1. Business Model Canvas

“Product-Market Fit”



2. Entrepreneurial Immersion Course

- 3-Day kick-off event
- 6 weekly web classes
- Each team is expected to conduct over 100 interviews over 8 weeks
- 2-Day Lessons Learned close-out



*Comprehensive medical device innovation center,
dedicated to accelerating development, building
businesses, and improving health.*

GCM collaborates with partners that provide input and become part of the team to establish milestones



GCM Offers:

- Early stage product strategy
- Design history file generation
- Client input and review
- Biomedical and mechanical engineering
- GMP compliant
- Preclinical testing
- Bioskills training
- Education
- GLP compliance
- AAALAC accredited

IMAT PI Meeting overview

- Respect confidentiality for presentation of unpublished data.
 - *This is not a public meeting and presentations do not represent a public disclosure*
- Note NCI program presentations throughout
- Group photo on Thursday PM break (~3:30pm)
- Welcome our guests!
- Logistics

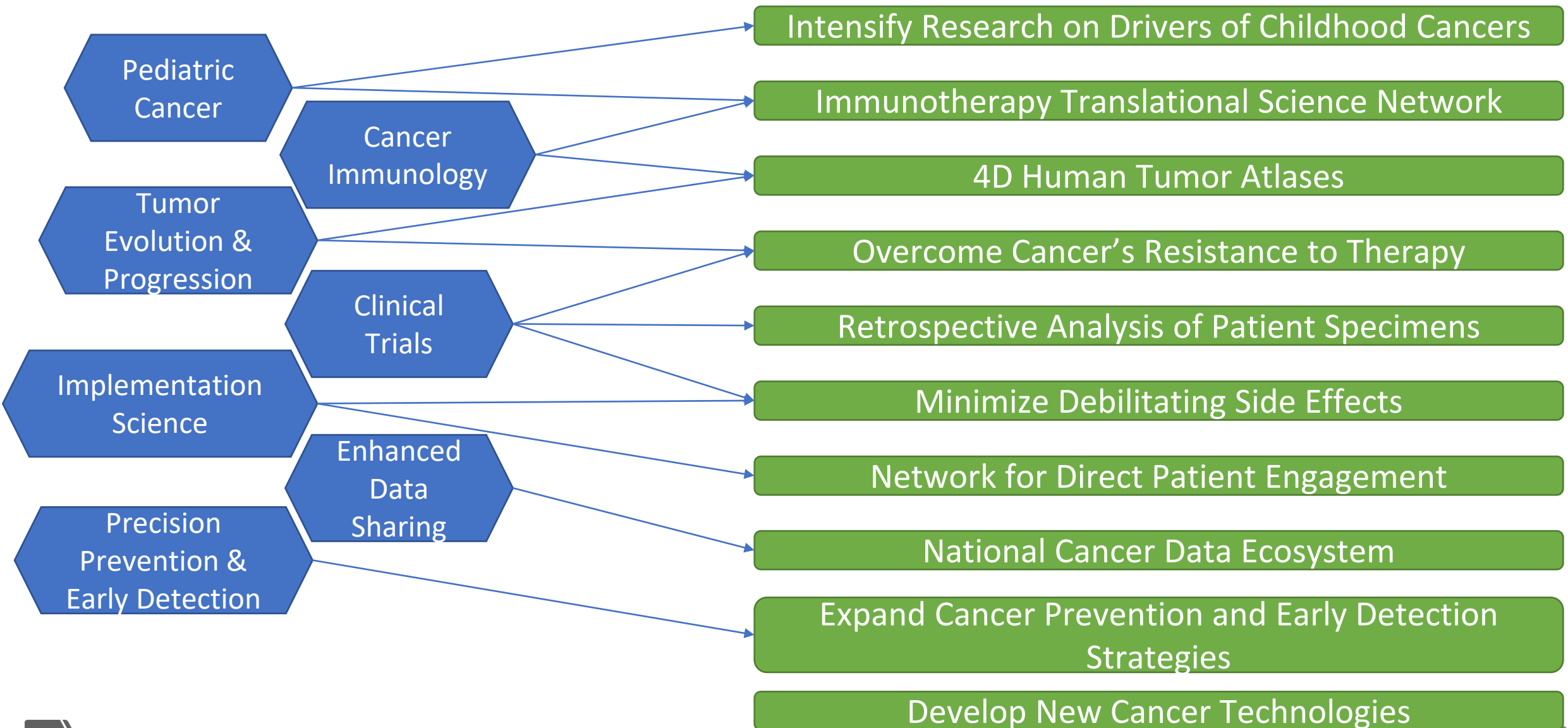


2019 PI Meeting?

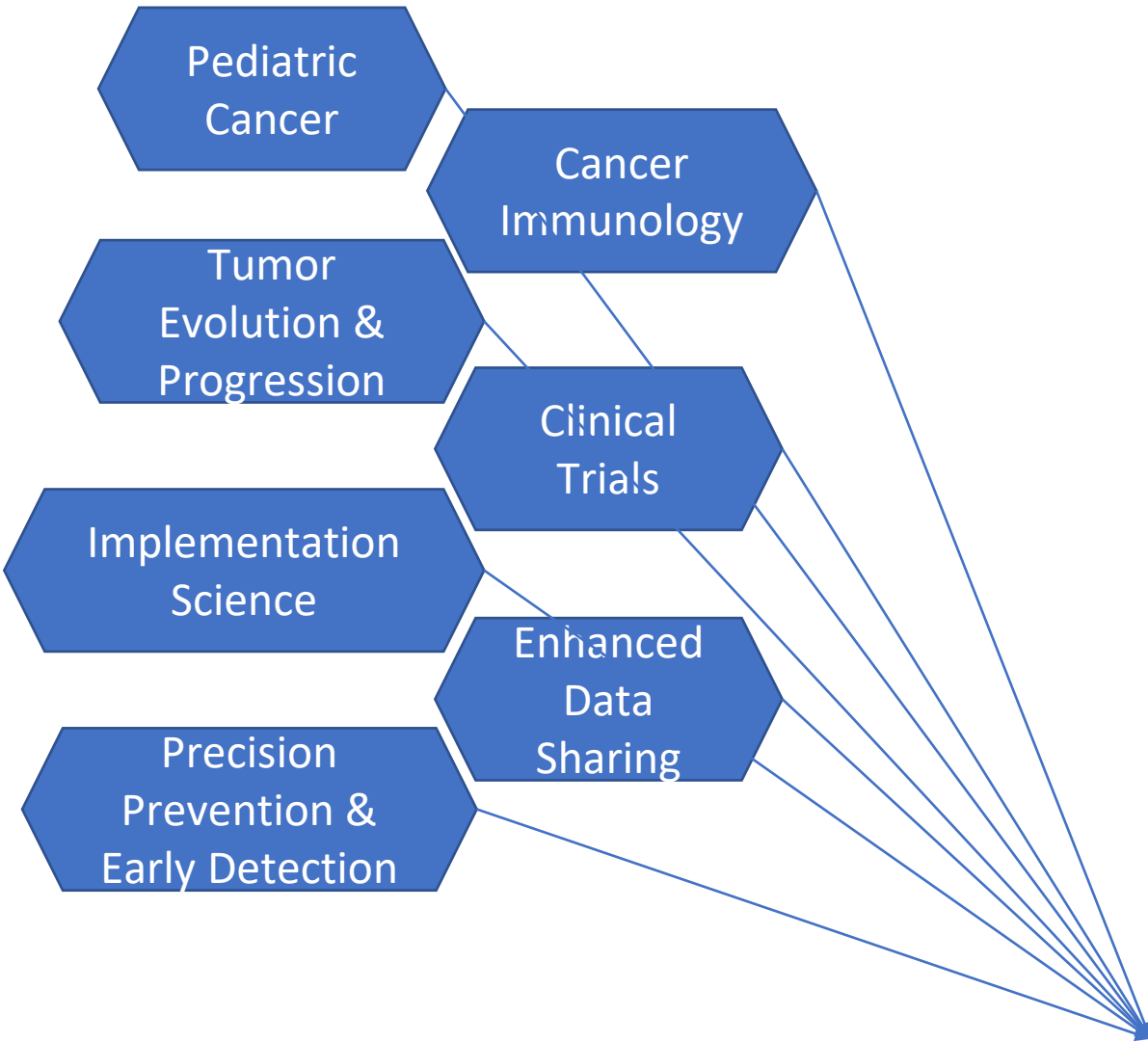


- Accelerate progress in cancer, including prevention & screening from cutting edge research to wider uptake of standard of care
- Encourage greater cooperation and collaboration within and between academia, government, and private sector
- Enhance data sharing

Blue Ribbon Panel



Blue Ribbon Panel



Recommendations

Intensify Research on Drivers of Childhood Cancers

Immunotherapy Translational Science Network

4D Human Tumor Atlases

Overcome Cancer's Resistance to Therapy

Retrospective Analysis of Patient Specimens

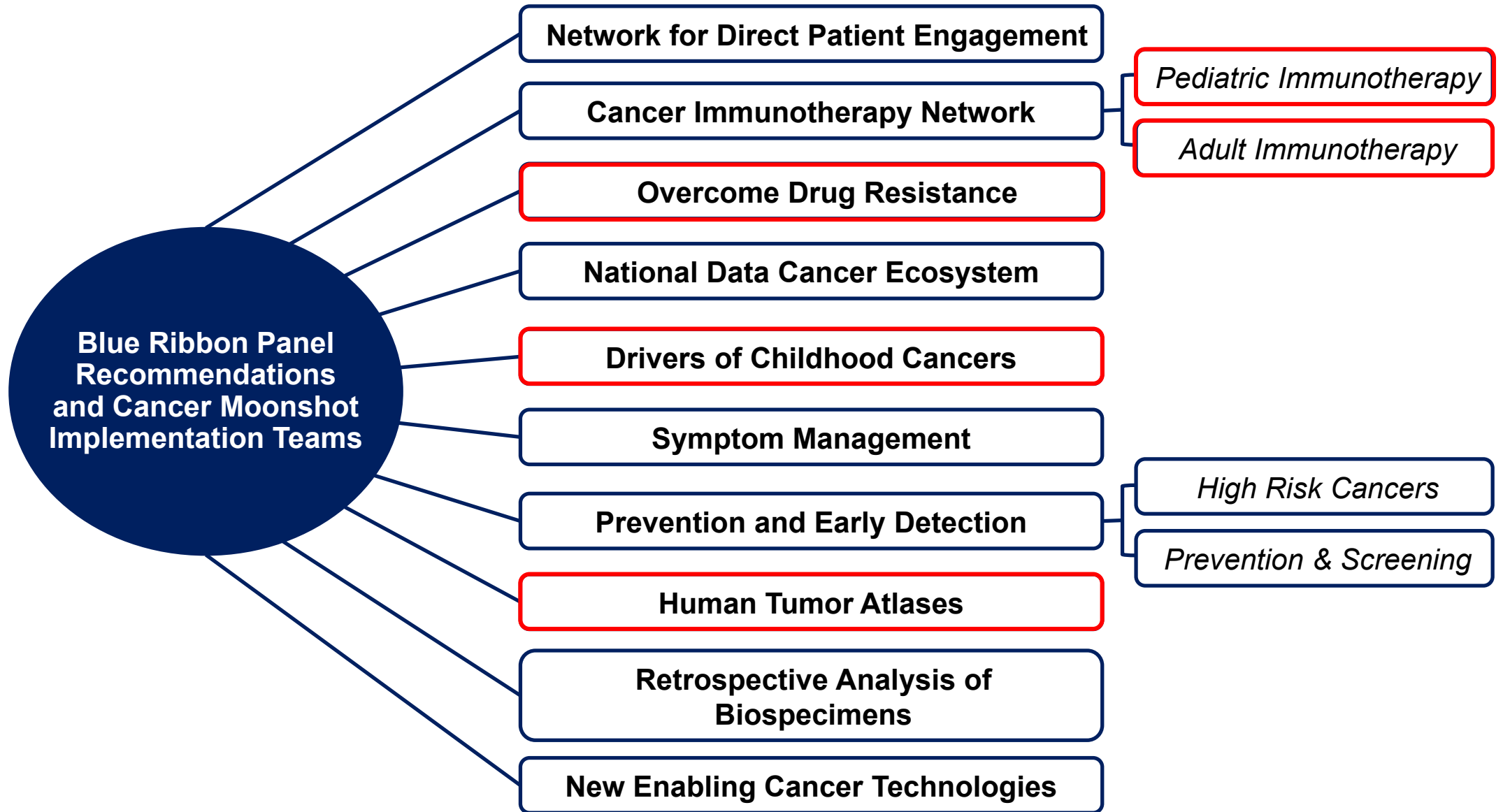
Minimize Debilitating Side Effects

Network for Direct Patient Engagement

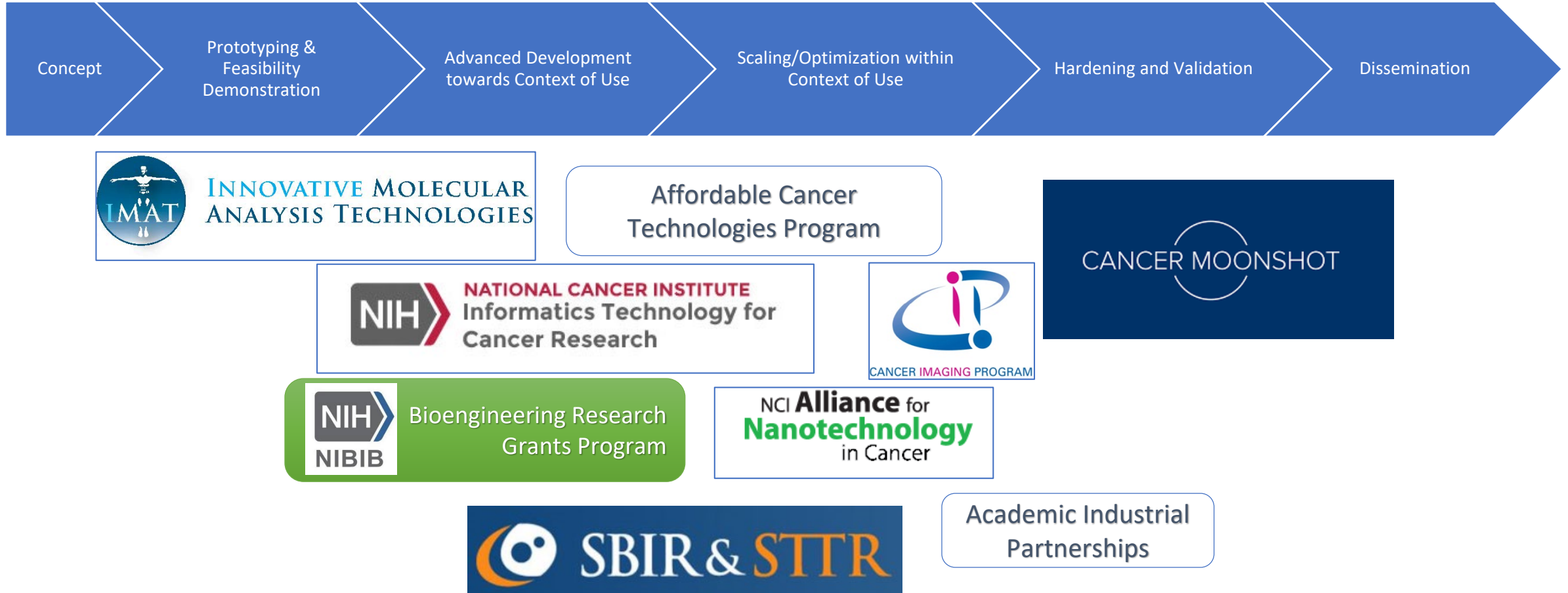
National Cancer Data Ecosystem

Expand Cancer Prevention and Early Detection Strategies

Develop New Cancer Technologies



NCI Support for Technology Development



BloodPAC

BLOOD PROFILING  ATLAS IN CANCER

Mission:

***To cut assay development times in half** through the creation of an open database for liquid biopsies, accelerating the development of safe and effective blood profiling diagnostic technologies for patient benefit.*

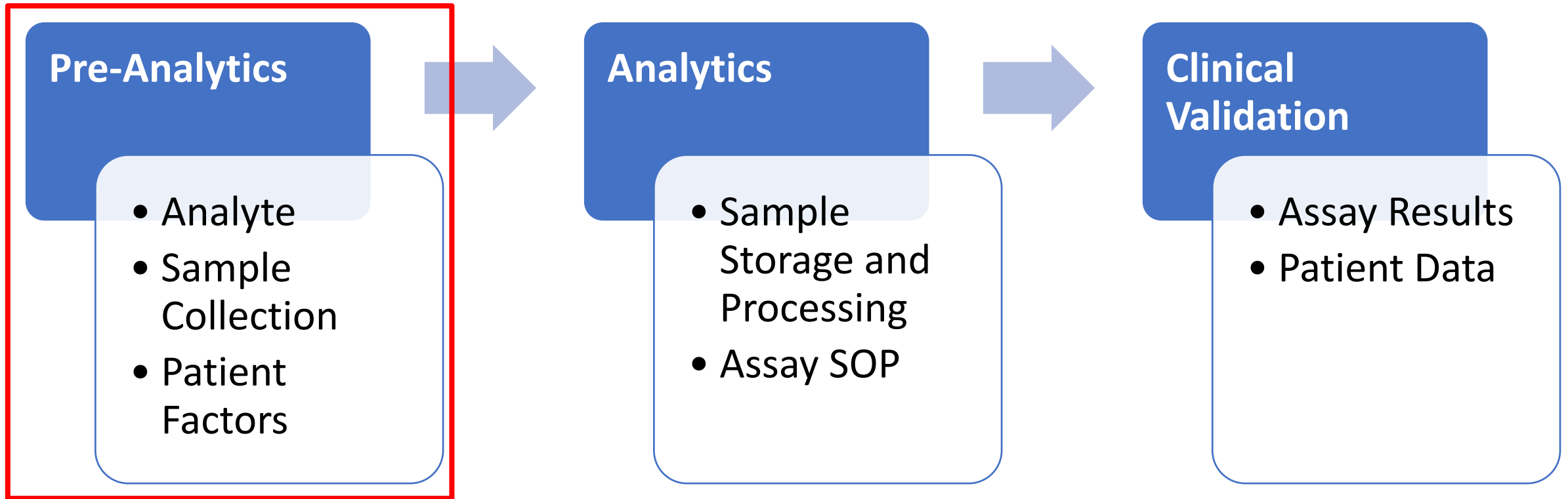
www.bloodpac.org

BloodPAC Members



THE ARKANSAS BIOINFORMATICS CONSORTIUM (AR-BIC) . ASTRAZENECA . BIODESIX . BREAST CANCER RESEARCH FOUNDATION (BCRF) . CELGENE . CHOP, COLLEGE OF AMERICAN PATHOLOGISTS (CAP) . CYTOLUMINA . DEPARTMENT OF DEFENSE (DOD) . EPIC SCIENCES . FDA . FOUNDATION MEDICINE . GENOMIC HEALTH . GUARDANT HEALTH . MEMORIAL SLOAN KETTERING CANCER CENTER . NATIONAL CANCER INSTITUTE (NCI) . NOVARTIS . OPEN COMMONS CONSORTIUM (OCC) . PCCTC, PERSONAL GENOME DIAGNOSTICS . PFIZER . PROSTATE CANCER FOUNDATION (PCF) . PROVISTA . SEVEN BRIDGES . STRECK . SYSMEX INOSTICS . THERMO FISHER SCIENTIFIC . UNIVERSITY OF CHICAGO . UNIVERSITY OF MICHIGAN . UNIVERSITY OF SOUTHERN CALIFORNIA, WEILL CORNELL MEDICINE.

Minimal Technical Data Elements - Variables that are required for submission of samples to the BloodPAC Data Commons.



Pre-Analytical MTDEs: variables that would affect assay performance, and are required for submission of samples to the Data Commons.

FDA has already agreed to the following pre-analytic cfDNA MTDEs

cfDNA MTDEs
Blood collection tube type
Blood fractionation approach
Time to fractionation
Time to freezer
Storage temperature
Shipment temperature
DNA isolation method name
DNA quantification method
DNA yield
Sample type
Time to assay

2018 NCI IMAT PI Meeting

**19th Annual Innovative Molecular
Analysis Technologies Principal
Investigators Meeting**

November 28 - 30, 2018

**Hilton Washington DC/Rockville
Rockville, MD**



[#IMAT2018](https://twitter.com/NCIIMAT2018)